



HAMPSHIRE
MEDICAL FUND

UPDATE

SPRING 2026



Newsletter from the Hampshire Medical Fund

A Message from Daniel Benton

Chairman, Hampshire Medical Fund



Dear Friends,

Thank you for opening this newsletter and for reading it. You are the people who stand by our side and support us month after month. You are the ones who make the real difference. By supporting us in the work we do, you help to equip our local NHS hospitals to provide the best care. We are incredibly grateful.

This newsletter is particularly action packed; showing how busy our office team, Trustees, corporate supporters and loyal Friends of the charity have been over the last six months. You will read over the next few pages about the pioneering da Vinci robot that the Hampshire Medical Fund was hugely proud to help fund at the tail end of last year. This is an absolute exemplar of what the Hampshire Medical Fund exists to do - it is **the most advanced surgical robot in the UK**. The brilliant surgical teams at Basingstoke & North Hampshire Hospital

have already completed over **100 pioneering surgeries**, 25% above target at this stage, and are delivering the most advanced patient care, with greater efficiency, better outcomes and better recovery times.

As we look to a fresh year of fundraising, please be inspired by the equipment that we have been asked to fund: the demand for what we do is as high as ever. Help us to do this simply by attending one of our events (of which we have two new ones), tell a friend or family member about the charity or action or encourage your Business to find a way to support us.

Together we really do make a difference.

Daniel Benton
Chairman



Skip a Coffee Save a Life

What if the price of a single
cup of barista coffee could
help save lives?

Just **£5 a month** – the cost of a coffee – could help fund vital, cutting-edge medical equipment for local NHS hospitals.

If each of our current supporters increased their donation by this small amount, together we could raise an extra **£25,000+** each year to support doctors and transform patient care.

And if you're not yet a regular supporter, starting a small monthly donation could make a real difference too.

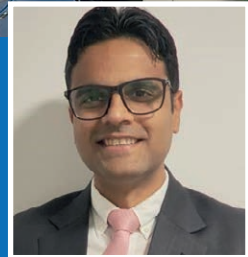
A tiny sacrifice. A powerful impact.
Sometimes the smallest gestures change lives.

Increasing your current donation to HMF is easy – just drop us an email with how much you would like to give and we can do the rest. If you would like to become a regular supporter, we would be delighted to hear from you too.

**DONATE
NOW**



A New Era in Surgery: Inside Hampshire's Robotic Breakthrough



Pulkit Sethi

In 2025, the Hampshire Medical Fund worked with Hampshire Hospitals Charity to bring the da Vinci 5 robotic assisted surgical system to Hampshire Hospitals NHS Foundation Trust, making it the first NHS trust in the UK to introduce the new technology. The equipment was installed in November 2025 and has been used extensively since then – the 100th procedure was carried out in February this year. We spoke to Pulkit Sethi, Consultant Hepatobiliary Surgeon, who performed the Trust's first da Vinci 5 cases, about the impact this new generation surgical robot is having.

Since the robot has been introduced, what tangible difference have you seen for patients?

The impact has been significant, both in terms of the delivery of complex surgery through precision-led minimally invasive techniques, and the outcomes for our patients.

From a technical perspective, the robot allows us to operate in anatomical areas that are extremely challenging to access using conventional laparoscopy. Standard laparoscopic instruments offer three to four degrees of freedom, whereas robotic instruments provide seven – effectively

replicating the movement of the human wrist. This enhanced articulation allows us to reach complex regions, such as the posterior segments of the liver, which are often challenging to access with standard keyhole instruments.

The platform also provides three working arms in addition to a dedicated camera arm. This means I can control retraction and exposure myself, eliminating reliance on the level of assistance. The result is exceptional stability, precision, and consistency throughout the procedure.

Some procedures that previously required an open approach can now be performed minimally invasively, without compromising

safety. This results in less postoperative pain, reduced analgesic requirements and fewer wound complications, translating into faster recovery and shorter hospital stays. The outcomes for open liver surgeries are already excellent, with a typical hospital stay of just three to four days – among the best nationally. However, the minimally invasive approach reduces this further to one to two days, with many patients discharged within 24 hours.

Can you describe how the technology changes a patient's experience?

The first step is demystifying the term “robotic surgery.” Many patients are understandably apprehensive when they hear the word “robot.” I explain clearly that the robot does not operate independently – I remain fully in control at all times. It is simply a highly sophisticated instrument that translates my movements into more precise, stable actions. Once patients understand that, their anxiety usually dissipates.



Beyond reassurance, the tangible benefits are clear: less postoperative pain, faster mobilisation, earlier discharge, quicker return to normal activities and work, and comparable or improved safety outcomes.

How will the robot help with surgical training?

Every surgery and surgeon has some learning to offer.

One of the most powerful aspects of the platform is its telepresence capability. By invitation, an experienced colleague can log in and view the surgery remotely through a secure connection. The video definition is impeccable. This allows an experienced surgical colleague, to contribute their expertise remotely when needed.

Their input remains invaluable, and they do not need to be physically present in theatre.

The accessory screens with Robot helm and tower are equipped with touchscreen annotation ability. This means a proctoring surgeon can mark and draw on the screen in real time to guide the operating surgeon within the field of dissection. I am already using this feature to train Registrars.

Do you think this will position Hampshire Hospitals as a leader in surgical education?

Yes, absolutely. This technology places Hampshire Hospitals at the forefront – both in delivering advanced robotic surgery and our involvement in training the next generation of surgeons. Immense work is being done within the fraternity to formally structure the Robotic Surgical training pathways and mentorship capabilities. I am confident that we will zealously adopt these to become a recognised centre for robotic surgical education.

A PATIENT'S EXPERIENCE

Gallstone Surgery

“My surgery took place around 12.30pm and I was home and walking around my house by 9.30pm that evening, with virtually no pain. And there was no healing needed - I didn't even have to have dressings. I just had little bits of glue and my 5 scars are tiny. It was incredible - no pain, no infection. The surgery has really given me my life back when previously I was struggling. The robot meant the surgery was done quickly, with no pain afterwards and an incredibly quick recovery.”

L.A.



Why is it important that hospitals invest in this level of innovation?

Because it improves outcomes while increasing efficiency. We are now able to perform more complex procedures in a minimally invasive manner with equal or improved safety profiles. I am already observing closer to 50% increase in productivity in my day case sessions.

There are also system-level benefits. Faster recovery, reduced analgesic use, fewer wound complications, and shorter hospital stays translate into lower per-patient costs. Reduced inpatient and HDU utilisation also frees capacity for other patients.

In the current NHS climate, delivering higher-quality care while improving efficiency is essential. This technology supports both objectives.

Has there been a particular moment when you thought, “This is exactly why we needed this”?

Yes. I was recently operating on a patient with colorectal cancer metastasis located in segments six and seven of the liver – a technically demanding posterior location. In a conventional setting, that may have required conversion to open surgery.

Using the robotic platform, I was able to continue with careful, incremental dissection. I gained safe access to the tumour. The assistant robotic arm provided stable retraction throughout the surgery – something that would be extremely demanding for a human arm.

I am confident that without the robot, it would have been very challenging to complete this surgery minimally invasively. For me, that was a defining moment in recognising the true value of this technology.

What benefits does the robot offer to surgeons themselves?

Surgeon ergonomics are often overlooked. Traditional open and laparoscopic surgery require prolonged periods in awkward and physically demanding positions. Over decades, this leads to significant musculoskeletal strain. It is not unusual to hear many senior surgeons developing neck, shoulder, or back problems.

A PATIENT'S EXPERIENCE

Liver Cancer Surgery

“I had every faith in the surgeons and the robot and it couldn't have gone better. I was simply astounded at how quickly I recovered. I had the operation on Thursday morning, I was sitting up by the afternoon, walking on Friday morning and then I was home by Friday afternoon. And I have had barely any pain. I never expected that when they were removing a section of my liver. I will be 80 in a few months and I would encourage people of any age to have this procedure with the robot.”

A.J.

The new robot allows me to operate in a neutral, ergonomic posture, with adjustable height and orientation for optimal neck, back, and shoulder comfort. At the end of a full operating day, I experience significantly less fatigue.

Surgeon wellbeing directly influences performance and longevity. A surgeon operating without physical strain can maintain concentration and precision for longer. Over time, protecting the physical health of surgeons ultimately benefits patient care and sustains workforce capacity.

2026 Upcoming Events

Celebration of Spring Wednesday 29th April

The *Celebration of Spring* concert at the Hospital of St Cross Winchester promises to be a wonderfully uplifting evening of music. Tickets include drinks, canapés and a vibrant programme performed by outstanding young musicians, including the dynamic Oscar Ellis Quartet, a budding group of Jazz musicians from two of London's leading conservatoires, Winchester College's acclaimed close-harmony group Cantores Episcopi, and Farleigh School's talented Senior Jazz Bands, 5 ft 6 and Sub Zero. Join us for a joyful evening celebrating the arrival of spring.



Scan here to buy tickets



Car Rally Sunday 10th May

We are looking forward to hosting our popular Classic Car Rally again this year on Sunday 10th May. This event welcomes over 45 cars to enjoy four picturesque stops across Hampshire and includes Breakfast, Lunch and Tea. We are delighted to be beginning at Wilton House near Salisbury, followed by a new track venue at Thruxton Circuit, heading to lunch at Rookesbury Park. And finishing with a tasty tea at Tangier Park in Wootton St Lawrence.

Scan here to buy tickets

Hampshire Medical Fund: The Great Adventure Challenge! Sunday 14th June

Pop your trainers on and get ready for the **Great Adventure Challenge!** This fun-filled course combines running sections with obstacle challenges to tackle with family and friends. It's not about speed – it's about teamwork, laughter and enjoying the adventure together. With an epic slippery slide and colour run finale, it's an experience not to miss! Teams of four can enter, suitable for ages 6+, with at least one adult (18+) per team.



Scan here to buy tickets



HAMPSHIRE
MEDICAL FUND

NEW 5km Event
Family Friendly
Obstacle Trail

**THE GREAT
ADVENTURE
CHALLENGE**



Teams of 4*
Adults £20, Children £15

Each team must commit to fundraising
a minimum amount of £100

To register and find out more:

www.hampshiremedicalfund.org/events

**Sunday 14th
June 2026 at
Dummer Down
Farm**

*suitable for children aged six
and up. Teams must include at
least one adult (over 18)

THE FUTURE PATHWAYS AUCTION

6th-20th April 2026

INSPIRING TOMORROW'S TALENT - FUNDING VITAL MEDICAL EQUIPMENT

Open Doors, Change Lives

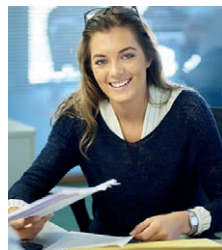
In April, we are launching an exciting new initiative – the **Future Pathways Auction**. We have asked businesses to donate **career insight and work-experience opportunities** offering them a meaningful way to support the next generation while also helping to raise funds for the charity.

These experiences will be auctioned online from 6th – 20th April, with people bidding on behalf of young people aged 17-25 for the chance to gain valuable insight into a profession or industry. From spending a few days observing life inside a business, to shadowing professionals or attending a career workshop, these opportunities offer an invaluable glimpse into the world of work.

Every bid placed in the auction will help the Hampshire Medical Fund continue its work.

Alongside the auction, some **pro bono opportunities** will also be offered to students from a local college, helping widen access to people who might not otherwise have the opportunity.

See below a glimpse of some of the opportunities that will be in the auction.



Three Days' Work Experience with Oberon Investments Group

Oberon is a financial boutique comprising four divisions: Investment Management, Wealth Planning, Private Ventures and Corporate Advisory & Broking. Over the three days the candidate will experience working with all the different teams at Oberon. This intensive three-day experience is perfect for anyone considering a job in finance.

CloudMundi AI & Data Augmentation Internship

CloudMundi is a data augmentation consultancy helping clients solve business problems through data analysis, augmenting internal client data with 3rd party data sources, using an array of AI and manual tools. At the end of this internship, they will have an introduction to the use of AI and modern development tools, grounded in real commercial projects.

An Evening Tour of the National Fusion Laboratory

The UK Atomic Energy Authority runs the UK's national fusion energy research programme. This is an exclusive opportunity to see some of their work developing sustainable fusion energy including a tour of the world's largest fusion experiment - the Joint European Torus - which, when pulsing, is the hottest place in the solar system.

Three Days' Work Experience at Atticus Partners

Experience working in the political and media communications world. The placement involves working with the team on client accounts, learning how clients navigate the complex media and political world. The work will be varied including monitoring parliamentary debates and drafting letters to politicians.



Scan here to register for the auction

2026 Equipment Wish List

These are highlights of some of the vital equipment that we are raising money to buy this year.



Fourier M2 Robotic Stroke Rehabilitation System

Strokes are the leading cause of adult disability in the UK with around 80% of patients experiencing reduced arm function. Yet only 5–20% will make a full recovery. NICE guidelines recommend high-intensity daily rehabilitation to maximise recovery, but rising patient numbers and workforce shortages mean this is increasingly difficult to deliver. The Fourier M2 robotic system delivers intensive, repetitive, task-specific arm therapy for stroke patients using robotics and gamified exercises. With stroke admissions rising, this technology will help stroke patients restore movement and hence regain independence, transforming long-term recovery outcomes. It increases therapy capacity without increasing staffing pressures. This system has the potential to improve recovery and outcomes for hundreds of patients each year.

TARGET: **£60,000**



PIQE AI Imaging Software for CT Scanners

CT scans are a vital diagnostic tool. PIQE is an advanced imaging software that can be installed on the new PRISM CT scanners in Basingstoke and Winchester. It is an advanced AI software that enhances the sharpness and clarity of CT scans, particularly for coronary CT imaging. By sharpening detail and improving detection of subtle abnormalities using artificial intelligence and deep learning technology, it enables more patients to receive a clear and confident diagnoses from a single scan, reducing the need for additional tests or invasive angiography. Once installed on CT scanners in Winchester and Basingstoke, PIQE will benefit over 600 cardiac patients annually, supporting faster diagnosis, improving outcomes and maximising the potential of our state-of-the-art imaging equipment.

TARGET: **£40,990**



0-Degree Robotic Scopes for Urology Robotic Service

These 0-degree robotic camera scopes will be used in conjunction with the da Vinci 5 Robotic Surgical System by the Urology department. Providing high-definition, straight-view imaging, they allow surgeons to perform precise, minimally invasive operations using a retroperitoneal approach – accessing the kidney from the back rather than through the abdomen. This means less pain, faster recovery, fewer bowel complications and safer surgery as well as increasing the departments capacity for surgery and reducing the length of hospital stays. Around 65–80 patients each year will benefit from this.

TARGET: **£49,928**



THuLEP Kit for Advanced Prostate Surgery

Thulium Laser Enucleation of the Prostate (THuLEP) is a minimally invasive technique used on Benign Prostatic Hyperplasia that is already well established across Europe but offered at only two centres in England. This approach removes more prostate tissue than standard surgery, offering longer-lasting results and fewer repeat procedures. It can safely treat larger prostates and patients on blood-thinning medication, reducing bleeding risks. With over 200 men each year benefitting from this advanced treatment, the equipment will position our hospital as a leading centre for this treatment of BPH.

TARGET: **£40,000**



Critical Care Sedation & Paralysis Monitoring

These advanced monitors will help intensive care teams precisely measure how deeply sedated or muscle-relaxed a patient is while on a ventilator. This reduces the distressing risk of patients being awake but unable to move, and avoids over-sedation that can delay recovery. By providing real-time brain and muscle monitoring, the equipment will improve safety, comfort and recovery for around 100 critically ill patients each year across Basingstoke and Winchester.

TARGET: **£19,638**



How can you help?

Training Headsets for Palliative Care


These specialist training headsets will allow doctors and nurses shadowing the Winchester Community Palliative Care team to hear full telephone consultations in real time. Without split training headsets, those observing can only hear one side of the conversation. With over 3,300 calls each year providing urgent symptom control and emotional support, this equipment will transform learning opportunities and strengthen specialist training. Better-trained clinicians mean more confident, compassionate end-of-life care for patients and families across our local community at probably the most vulnerable moments of their lives.

TARGET: £291

Plusoptix Paediatric Mobile Autorefractor

This child-friendly, portable device measures a child's glasses prescription without the need for dilating drops. The quick, painless scan reduces distress, particularly for children with autism, learning disabilities or Down syndrome. It will prevent unnecessary consultant appointments and hence shorten waiting lists, benefitting around 286 children annually. By making eye assessments faster and more comfortable, the Plusoptix improves both patient experience and clinic efficiency

TARGET: £4,193



SCAN THE QR CODE TO DONATE

DONATE BY TEXT

Text **10NEWS** to **70085** to donate **£10**

Text **20NEWS** to **70085** to donate **£20**

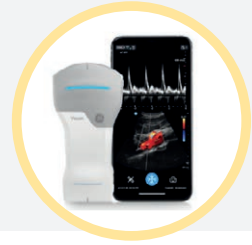
Texts will cost the donation amount plus one standard network rate message.



BECOME A FRIEND

Scan here to become a Friend of HMF.

Friends of HMF are regular donors who give money to the charity either monthly or annually. Regular donations make a real difference to us being able to continue with our work.



Triton 2 OCT Eye Scanner

The Triton 2 OCT is an advanced, non-invasive eye scanner that acts like a “3D radar” for the back of the eye, detecting early signs of glaucoma, age-related macular degeneration and diabetic retinopathy. Using cutting-edge Swept Source technology, it delivers highly detailed, layered images of the eye’s internal structures. By identifying subtle changes earlier, clinicians can intervene sooner and protect patients’ sight which can never be regained once lost. It will also enable remote specialist review, increasing capacity and reducing unnecessary appointments. A second machine in the Eye Day Care Unit will reduce waiting times and hospital travel for frail patients, benefitting over 4,500 people each year.

TARGET: **£96,901**

12

Neonatal Transport Incubator

This specialist transport incubator will ensure the safe transfer of premature and critically ill babies within Basingstoke Hospital. The enclosed incubator maintains stable body temperature – essential for very preterm infants – and allows a ventilator to be securely attached during transfer. This ensures babies who are intubated in maternity to be moved securely from delivery suite to neonatal care. Beyond emergency transfers, the incubator can also be used to transport babies needing respiratory support to see their mothers on the maternity ward when mothers are unable to visit the Neonatal Unit, supporting vital early bonding. Around 250 newborns each year will benefit.

TARGET: **£26,000**

Wireless Probes For Radiology

Ultrasound scanning is one of the most widely used diagnostic tools supporting approximately 17,000 patients each year. At HHFT, around 30% of patients scanned are obese, immobile, or both. Fixed room layouts and limited cable length can make it difficult to position equipment optimally, forcing clinicians to work in awkward positions in order to obtain clear images. Wireless ultrasound probes reduce strain on sonographers and improve comfort for patients. They allow clinicians to move freely around the patient, improving image quality and reducing the need for further scans such as MRI or CT. The probes will benefit approximately 17,000 patients annually while reducing staff musculoskeletal injuries which leads to pain and time off work.

TARGET: **£19,945**



4D Ultrasound Probes for Gynaecology

Traditional 2D ultrasound produces flat, cross-sectional grayscale images of anatomy. 4D ultrasound provides real-time 3D imaging, allowing clinicians to view detailed volumetric images of structures such as the uterus and ovaries from multiple planes simultaneously. This advanced imaging significantly enhances diagnostic accuracy and will reduce the need for invasive procedures and investigations such as hysteroscopy and may prevent additional MRI scans. With around 10,000 women annually likely to benefit by expanding access to this technology at Andover and Alton, and will improve comfort and diagnostic accuracy whilst reducing pressure on acute hospital sites.

TARGET: **£12,600**



Video-Assisted Minimally Invasive Treatment

Anal fistulas and pilonidal disease are painful and distressing conditions that can significantly affect quality of life, self-esteem and ability to work. This minimally invasive, camera-guided technique allows surgeons to find, clean and seal abnormal tunnels (as in perianal fistulas and pilonidal disease) from the inside avoiding major surgery, and protects against complications such as incontinence. Performed as a day-case procedure, it reduces pain, wound complications and postoperative care, and enables a quicker recovery, shorter hospital stays and improved quality of life. It will benefit over 100 patients annually while reducing pressure on appointments, theatres, radiology and inpatient beds.

TARGET: **£9,820**



BD EleVation™ Vacuum-Assisted Breast Biopsy System

When a patient presents with a suspicious breast lesion, a biopsy is essential to determine whether it is benign or cancerous. This provides reassurance for many and enables timely, accurate treatment planning for those with breast cancer. This system is an advanced, minimally invasive technology used to diagnose suspicious breast lesions. Unlike standard core needle biopsies, it removes larger, higher-quality tissue samples through a single insertion. Studies show significantly lower re-biopsy rates, meaning fewer repeat procedures and faster, more reliable diagnoses reducing discomfort and anxiety for patients. This will benefit around 400 patients each year.

TARGET: **£8,560**

A Simple Tick That Adds 25% to Your Gift



Gift Aid boosts your donation for the charity - and higher-rate taxpayers can claim extra tax relief too!

Did you know that your donation to the Hampshire Medical Fund could be worth 25% more – at no extra cost to you? And if you are a higher rate tax payer you could also be claiming extra tax relief.

Gift Aid is a government scheme that allows charities to claim back the basic rate of tax already paid on your donation. If you are a UK taxpayer and complete a Gift Aid declaration we can reclaim **25p for every £1 you give** from HMRC.

How it works

If you donate £100 to the Hampshire Medical Fund and tick the Gift Aid box, we can claim an extra £25 from HMRC.

That means your £100 donation instantly becomes £125 without costing you anything extra.

Why is Gift Aid an extra 25% if the charity is claiming back basic rate tax which is 20%?

The charity is allowed to claim 20% of the pre-tax amount you earned to make that donation. Therefore to donate £100 from your post-tax income, you would've needed to earn £125 before tax (because 20% of £125 is £25).

The charity then claims 20% of that pre-tax £125, which is £25. So the £25 is 25% of your original £100 donation, but 20% of your pre-tax income!

Extra tax relief for higher-rate taxpayers

If you pay higher or additional rate tax in England, you can personally claim further tax relief on your donation on top of the Gift Aid the charity claims. You can claim the difference between the highest rate of tax you pay, and 20% basic-rate tax. This table shows how much extra you could get in tax relief on a £100 donation.

So, if you are a **40% taxpayer** and donate **£100 with Gift Aid**:

- The charity receives **£125**
- You can claim £25 back through your tax return or by contacting HMRC
- This means we receive **£125 but it effectively costs you just £75.**

N.B. Please note that tax rules can change and individual circumstances vary. This information is provided as a general guide only and should not be taken as tax advice. If you are unsure about your personal tax position, please consult a professional adviser or HMRC.

Gift Aid Form

Please email christine@hampshiremedicalfund.org if you would like to receive a gift aid form.

Tax band	In England, Wales & Northern Ireland
Higher rate (40%)	£25
Additional/ advanced rate (45%)	£31.25

Why Support the Hampshire Medical Fund?

Do you or your loved ones use Hampshire's NHS hospitals? Would you like to see your donation directly improve the care and treatment available in your community?

By supporting us, you help us ensure that our hospitals have access to cutting-edge equipment that the NHS cannot afford. These are a few good reasons to support HMF:

Attracting and Retaining Top Medical Professionals – By providing pioneering equipment, we help our NHS Trust bring in and retain the best medical staff.

A Direct and Local Impact – Unlike larger national charities, donations go directly towards providing our local hospitals with innovative equipment.

Faster Diagnoses and Treatment – Advanced equipment enables quicker, more accurate diagnoses, thereby reducing waiting times and facilitating faster, more effective treatments.

Improved Patient Outcomes – Cutting-edge technology enhances the precision of medical procedures, leading to better recovery rates.

Benefitting All Ages and Medical Needs – From premature babies to elderly patients, our funded equipment serves people at every stage of life.

Giving Back – Have you been helped by these hospitals? Supporting us is a meaningful way to give back.

Saving money and resources – Most of the equipment we fund helps the hospitals save money through:

- Enhanced Efficiency & Accuracy
- Prevention of Complications
- Fewer Hospital Admissions
- Shorter Hospital Stays
- Technology Replacing Manual Tasks



Skip a Coffee Save a Life

What if the price of a single cup of barista coffee could help save lives?

Just **£5 a month** – the cost of a coffee – could help fund vital, cutting-edge medical equipment for local NHS hospitals.

If each of our current supporters increased their donation by this small amount, together we could raise an extra **£25,000+** each year to support doctors and transform patient care.

And if you're not yet a regular supporter, starting a small monthly donation could make a real difference too.

**A tiny sacrifice. A powerful impact.
Sometimes the smallest gestures change lives.**

Increasing your current donation to HMF is easy – just drop us an email with how much you would like to give and we can do the rest. If you would like to become a regular supporter, we would be delighted to hear from you too.

12
Miss N Gouharian



Richard Hindley demonstrating the Aquablation robot at HMF's 2025 Equipment Evening

HMF Funded Equipment Now Supporting Groundbreaking Prostate Cancer Research Trial



Richard Hindley

When the Hampshire Medical Fund funded the Aquablation Robotic System for Basingstoke Hospital in 2024, it marked the arrival of the Trust's first robotic surgical technology. The system has already transformed treatment for men with benign prostate enlargement (BPE). Now, in an exciting new development, it is also being used as part of an international clinical trial investigating a potential new approach to prostate cancer treatment. We spoke to Richard Hindley, Consultant Urologist at Basingstoke Hospital, to learn more.

Can you briefly explain what the Aquablation Robotic System is normally used for?

It is usually used to treat men with urinary symptoms due to benign (non-cancerous) enlargement of the prostate. Each year, more than 30,000 men in the UK require surgery for an enlarged prostate, a condition that can severely impact a person's quality-of-life. It affects both urinary and sexual functions, placing pressure on the bladder and urethra, making it difficult to pass urine.

How does the Aquablation Robotic System work and why is it the best way of treating this condition?

Traditional invasive treatments for prostate enlargement come with high risks of irreversible life-altering side effects such as additional bladder control issues and compromised sexual function.

Our Aquablation Robotic System offers a safer, more effective alternative with a very low risk of complications. It is a heat-free technique which is good as there is therefore

a lower risk of side-effects. The technology delivers unparalleled precision and uses a waterjet to remove or ablate the prostate tissue while protecting critical anatomy.

You recently used the Aquablation Robotic System on a prostate cancer patient as part of a medical trial. What was the procedure?

Yes, this was an interesting case with hopefully more to follow. We used the aquablation waterjet to remove additional tissue in the periphery of the prostate, not just the central obstructing component. It is like removing all the orange segments but leaving the outer peel behind which protects the nerves. When a radical prostatectomy cancer procedure is normally performed, the entire 'orange' gets removed and then the urethra is stitched to the bladder and this can result in damage. The precision of the Aquablation System enabled us preserve the periphery of the prostate instead of removing it entirely. If the trial proves successful we hope this will mean less invasive surgery can be used to treat prostate cancer.

What was the outcome of the procedure?

It went well and the patient is pleased with the outcome four weeks after the procedure. We are operating on a second case at the beginning of April.



Hospital staff with new Aquablation machine in 2025

You were able to use the equipment in this new way because it is part of a trial. Can you tell us more about the trial?

For the trial we are working with some of the best cancer centres in the world such as the Cleveland Clinic in the US and the Royal Marsden here in the UK.

In using the Aquablation System for something it was not originally designed for, we couldn't predict how good the results would be, so a formal medical trial needs to be conducted.

We qualified for the trial because we had a good reputation for trial work and already had the Aquablation System. It was a requirement that one of the team had already performed more than 30 cases for benign enlargement. As I qualified for this, we were able to participate in the trial.

If this trial proves to be successful, what does this mean for men with prostate cancer?

If the trial proves successful it will mean we will be able to provide a much less harmful alternative to the current standard of care for prostate cancer, which is a robotic assisted radical prostatectomy. When the Hampshire Medical Fund first funded this cutting-edge equipment, I spoke about how it would open doors to us for further research and this is a perfect example of that.

The benefits would include less discomfort post-procedure, a quicker recovery with earlier return to normal activities, and a lower likelihood of side-effects.



Aquablation machine

INNOVATION IN ACTION: ONE YEAR ON BK Urology Ultrasound Machine



Following a generous donation from the Prostate Cancer Support Organisation (PCaSO), HMF purchased the BK Urology Ultrasound Machine for the Urology department at Winchester Hospital at the end of 2024.

This new machine provides high-resolution imaging and improved biopsy accuracy, which are critical in detecting and treating prostate cancer in its early stages. It is also facilitating the training of clinical nurse specialists which will in turn increase the number of patients that can be seen. We recently caught up with Mr Tim Nedas, Clinical Director for Urology at Hampshire Hospitals NHS Foundation Trust, to ask about the impact of this equipment.

What are the biggest challenges you face when diagnosing prostate cancer and how has the new machine helped?

One of the biggest challenges is matching the number of patients referred to us with the resources available to deliver the diagnosis for every patient. The new machine enables us to now undertake diagnostic biopsies at Winchester hospital, as well as Basingstoke. This significantly enhances the resources we have in the area and, vitally, increases the number of patients we can diagnose. Streamlining the diagnostic services across our hospitals has made a considerable difference to the flow of patients through our diagnostic pathway. It has also enabled patients to be offered a choice of a procedure closer to home.

How common is prostate cancer?

Prostate cancer is one of the most common cancers in men, with approximately 1 in 8 men potentially being diagnosed with it in their lifetime. I would ask that anyone reading this article takes the time to become prostate aware or ask their male relatives if they are prostate aware. There are many resources on the internet including our generous

supporters PCaSO (www.pcaso.org) and the NHS guidance is that men aged over 50 or over can ask their GP for a PSA test, even if they do not have symptoms.

Why is early detection so critical?

Despite the above statistics, the prognosis for prostate cancer is considerably improved if diagnosed quickly. Having the ability to combine MRI scanning with the precise and efficient biopsy facilities offered by the BK Ultrasound Machine is vital in improving our diagnostic capacity and indeed, early detection can often lead to a position of controlled observation of a patient rather than the need for immediate treatment. The biopsies that we undertake using the new machine are also widely considered to be less traumatic for the patient which has obvious benefits and often encourages more men to be checked which in turn allows us to identify quicker those men who might have advanced prostate cancer.

PCaSO (Prostate Cancer Support Organisation) is a patient-led charity supporting men with prostate cancer and their families across Hampshire, Sussex and Dorset. It also carries out PSA blood testing, testing an average of 500 men per session, and helps fund equipment to improve diagnosis and treatment, joining up with the Hampshire Medical Fund to purchase the BK Ultrasound System. For upcoming test dates, visit www.pcaso.org.

“More patients get seen earlier, leading to better outcomes”

Our Impact

Over the last 10 years we have purchased more than 165 pieces of equipment worth over £5 million.

Breast Cancer



Sysmex Sentimag System

Intensive Care



Hamilton Transfer Ventilators

Cardiology



Farapulse System

Bowel Cancer / Disease



Bowel Disease Marker

Paediatric Emergencies



Airvo 3 System

Stroke / Dementia



FEES Equipment



SCAN HERE TO DONATE

Or Text 10HMF to 70480 to donate £10

Texts will cost the donation amount plus one standard network rate message.

Events



Celebration of Christmas

Our Celebration of Christmas concert is always a hugely uplifting evening in the lead up to Christmas and this year was no exception. Set against the stunning backdrop of Winchester Cathedral, we were treated to an evening of wonderful music and singing from the Winchester Cathedral Chamber Choir, Twyford School Senior Choir and the Ebrius Brass Ensemble. Alongside, were some fantastic and thought-provoking readings, both poignant and humorous and together, we celebrated Christmas whilst recognising the important work that we do. Thank you to JM Finn for their ongoing lead sponsorship of this event, and also the supporting sponsorship from Lucy Marsh Interiors, Fowler Architecture & Planning, NFU Mutual North Hampshire, The Walcote Practise and Phillips Law.



Christmas Fair

In November we had a fabulous few days at our Christmas Fair at Pinglestone Barn, New Alresford. This year's fair began with a new, exclusive early shopping experience and corporate lunch for HMF Business Friends and featured a fantastic informal talk by CNN presenter and Royal Correspondent, Max Foster. This was really well received and a fascinating insight behind the scenes. We enjoyed a jam-packed few days with a brilliant mix of stallholders, some superb catering and an incredible number of shoppers who supported us throughout the event (despite the adverse weather!) and there was a really happy festive atmosphere from start to finish. Thank you to all our sponsors, and to the incredible committee and volunteers who helped throughout.



B2B Breakfast

Our first B2B event of 2026 was held at the Winchester Autobarn which proved a really fun and original venue for our latest Business Friends breakfast. We welcomed a number of new businesses, whilst catching up with lots of existing supporters. These events are always hugely rewarding in allowing us to update our corporate supporters with our plans for the year ahead and share with them the various ways we can work together. We would also like to thank Trethowans who kindly spoke about the mutual benefits of event sponsorship and gave such a useful insight into the opportunities with HMF.

Why I support the Hampshire Medical Fund and its mission to bring cutting edge equipment to our local NHS hospitals

One of the Hampshire Medical Fund's long-standing supporters shares his personal story and explains why access to cutting-edge medical innovation has inspired him to support the charity's mission.

If there's one thing my life has taught me, it's the extraordinary **difference that medical innovation** can make.

Over the past forty years, I've been fortunate enough to benefit from several breakthrough treatments – **interventions that quite simply changed** the course of my life.

My experience with atrial fibrillation began in the mid-1980s, when I was not yet 50. Over the next 20 years the episodes became more frequent and increasingly disruptive. At one stage I was going into fibrillation once or twice a week. In an attempt to shock my heart back into rhythm, I would go running for half an hour – sometimes in the most unlikely places. It sounds eccentric, but it worked.

In 2005, through an extraordinary stroke of luck, I was advised to travel to Bordeaux to see Professor Haïssaguerre, who had invented a new ablation technique to treat atrial fibrillation. I went to see him and I ended up being one of the first people to be effectively cured using this innovative procedure. It was a turning point.

Then in 2015 I required open-heart surgery to replace my aortic valve. That too was successful – but nine years later the valve began to fail. Once again, I was fortunate. A very new, far less invasive procedure called TAVI (Transcatheter Aortic Valve Implantation) was available. Instead of opening my chest, surgeons were able to place a new valve

inside the old one in about an hour. I had the procedure in May 2024 and it was successful.

Last year, influenced by my own experience with atrial fibrillation and TAVI I helped the Hampshire Medical Fund to fund the Farapulse Pulsed Field Ablation System now being used in Basingstoke Hospital. This is an advancement in the treatment of atrial fibrillation. It allows procedures to be carried out more quickly and with greater safety. It is also more effective and less painful for patients.

My personal history has shown me what access to the very latest medical technology can mean. It means fewer risks, faster recovery, **better outcomes – and, quite simply, more life.**

That is why I support the Hampshire Medical Fund. Because I know firsthand that the best equipment is not a luxury – it is transformative. Thanks to innovation, 40 years after I first experienced problems with my heart's function, I am still here. Still active and riding my bicycle at 86 years old.



**Scan here
to Become
a Friend**

Why Support HMF?

What motivates someone to become a 'Friend' of HMF? We invited a number of our regular supporters to share why they give – and what our mission means to them.

"Basingstoke Hospital treated me when I had a bad episode of asthma and I wanted to be able to give something back to the people who helped me. I found out about the Friends of HMF and signed up as an annual thank you to the medical team who treated me. This way, I help with the funding of life saving equipment needed at my local hospital."

M.L.

"I was drawn to the targeted purchase of specific equipment. There is something tangible about knowing you helped put a bit of kit into a hospital. You know the patients are benefitting and that medical staff are enjoying having best in class equipment. Both outcomes make for a better all round hospital environment. And of course, one day it might be me who needs it!"

F.G.

"I haven't currently been lucky - or unlucky - enough to personally benefit from the life-saving equipment provided by HMF, but given the scope of the technology and its use across all our wards, clinics and theatres, I feel it's only a matter of time. Signing up to commit to a small monthly payment felt like a worthwhile and very easy way to contribute. Given medical advances and the sky-high costs of running the NHS it's comforting to know that HMF can target its equipment donations to where they are needed most. The charity has saved thousands of lives and improved countless others."

A.F.

"I wanted to support a charity that truly makes a difference. After receiving such kind and dedicated care at Winchester Hospital, I felt a deep sense of gratitude. When I learned that the Hampshire Medical Fund helps provide vital equipment beyond NHS budgets, it felt like the perfect way to give something back. Supporting the Fund is my way of saying thank you and helping ensure others receive the same excellent care I did."

Robert Lawrence

"When I found out about HMF nearly 20 years ago, I immediately felt excited about being able to contribute directly to something that would make a very quick impact on saving people's lives by getting advanced medical equipment into our local hospitals."

W.B.

"We joined the HMF over a decade ago because we wanted to support our local hospitals. The NHS is constantly stretched for funds and while we have some amazing doctors, their work is made easier and more efficient when they have access to the most up to date equipment and technology. The team behind the fund do an amazing job and we always look forward to hearing what they are aiming to purchase next."

Deborah and Mark De Groot



HAMPSHIRE
MEDICAL FUND

Become a Friend of **HMF** and support your local Hospital:

Basingstoke & North
Hampshire Hospital

Royal Hampshire County
Hospital, Winchester

Andover War
Memorial Hospital

PRIZE DRAW

Win a **DEXA Body Composition Scan
& Mini Health Screen**

Sign up as a 'Friend' of the Hampshire Medical Fund before 30th June 2026 and you'll be entered into our exclusive prize draw to win a DEXA Body Composition Health Scan with a Mini Health Screen at The Candover Clinic.

Becoming a 'Friend' means setting up a regular donation to help us fund vital, cutting-edge medical equipment for your local NHS hospitals. You'll be supporting life-saving care for others - and you could also win the opportunity to gain invaluable insight into your own health, with a comprehensive body composition scan and a mini health screen.

To qualify for the draw, your Friend status must still be active in June 2026. Your first payment will act as your entry to the prize draw so you will not be able to claim Gift Aid on this first payment. Subsequent payments will be eligible for Gift Aid. T&Cs apply.



Scan here to Become a Friend

Find out more at hampshiremedicalfund.org

Registered charity Number 1192553



Help in the Community

We have once again been blown away by the phenomenal support from our community in recent months. From art raffles to corporate initiatives, Christmas markets to carol singing, we have been incredibly fortunate to receive generous donations and goodwill from so many. Together, we truly can make a difference – and that community spirit is invaluable.

The lead-up to Christmas was a particularly busy and exciting time, with wonderful events held across the county in support of HMF. The **Highclere Valley** Christmas Fair was filled with festive cheer, bustling stalls and happy shoppers, raising just over £2,000. In Winchester, the **Waynflete Singers** lifted spirits with their beautiful carols at the Buttercross, while the HMF team enjoyed meeting new supporters and catching up with familiar faces at the Winchester Christmas Market.

We were also privileged to receive support from several talented artists. **Jessica Hills** and **Rose Osborn** ran a fantastic artists' raffle during their Foals & Fables exhibition in London, raising funds on our behalf. Closer to home, **Emma Lowres** generously painted stunning local scenes for our Christmas cards and notelets. **RW Armstrong** also ran a Christmas advent raffle in aid of HMF, raising an impressive £5,126.

Our Business Friends continue to provide

incredible backing, both through sponsorship and creative in-house initiatives. We are delighted to have been chosen by **De La Rue** as one of their nominated charities this year and have already received the proceeds of their Christmas Fair. **Cornflower**, a leading supplier of bespoke printed products and one of our newest Business Friends, launched a 'penny per postcard' initiative, raising £500 for HMF. Meanwhile, **NFU Mutual North Hampshire Agency** donated £1,000 through their generous pledge to give 5% of the annual premium from new home or commercial policies taken up by HMF supporters.

Finally, a heartfelt thank you to everyone who has given their time and energy to support us at events. It is truly a team effort, and we simply could not achieve what we do without such steadfast backing. Every contribution makes a real difference. If you are inspired to fundraise for Hampshire Medical Fund, we would love to hear from you and help bring your ideas to life.



Business Friends

The Hampshire Medical Fund are incredibly grateful to all our Corporate Supporters:



2026 B2B Dates:

8.30am - 10.30am

Thursday 23rd April
Thursday 10th September



www.seatonevelyn.com



www.savills.co.uk



benhampark.com



www.optibacprobiotics.com



www.sequoiahair.co.uk



www.stonevine.co.uk



www.thewrinkledr.co.uk



www.mustique-island.com

Basing
Hand & Shoulder Clinic
www.basinghandclinic.co.uk



www.harlequinpools.co.uk



Trinity Bridge



fern-design.co.uk



www.faap.co.uk



www.wt-lm.com



colouredcourts.co.uk



www.aardvarkmcleod.com



www.kingsclerevets.co.uk



www.heartwoodvets.co.uk



www.middletonadvisors.com



www.oberoninvestments.com



www.johnstonparkeinteriors.com



www.bluebirdcare.co.uk

THE GROSVENOR
STOCKBRIDGE
www.thegrosvenorstockbridge.com



www.salisbury-orthodontics.co.uk

Candover Clinic
Empowerment
www.candoverclinic.com



www.calicoprivatetravel.com



www.lucysprygardendesign.com

DR.VEGAN
www.drvegan.com



www.eightfinancialadvice.co.uk



crownandanchorham.co.uk



chic-teak.co.uk



HAMPSHIRE
MEDICAL FUND

AN INVITATION TO
A Celebration of
SPRING

An uplifting evening of music

Wednesday 29th April
Drinks Reception 6.30pm - 7.45pm · Concert 8.00pm - 9.30pm

In association with



Our Patrons: Lord & Lady Lloyd Webber
Chairman: Daniel Benton

Committee:

Lucy Arnott · Heather Balmain · Lucy de Laszlo · Romaine Foot
Wink Hanbury · Christopher Normand · Eloise O'Donohoe
Emma Stephenson · Georgina Wyatt

Kindly sponsored by



LUCY SPRY
GARDEN DESIGN

www.hampshiremedicalfund.org



Scan here to
buy tickets

How can you help?



**SCAN THE
QR CODE
TO DONATE**

DONATE BY TEXT

Text **10NEWS** to **70085** to donate **£10**
Text **20NEWS** to **70085** to donate **£20**

Texts will cost the donation amount plus one standard network rate message.

BECOME A FRIEND



Friends of HMF are regular donors who give money to the charity either monthly or annually. Regular donations make a real difference to us being able to continue with our work.

Scan here to become a Friend of HMF.



**HAMPSHIRE
MEDICAL FUND**

PLAY THE HAMPSHIRE MEDICAL FUND LOTTERY

...and help us fund cutting-edge medical equipment at our local NHS hospitals

Support the Hampshire Medical Fund by signing up for our weekly lottery and from just £1 a week you could win up to £25,000!

We have partnered with Unity, the nation's charity lottery, to offer you the chance of winning money every week whilst supporting us.

**SCAN
HERE TO
SIGN UP**



hampshiremedicalfund.org
Registered Charity Number 1192553



FROM JUST
£1
PER PLAY

WIN UP TO
£25,000
PER WEEK

A minimum of 50% of the total lottery proceeds go to supporting the work carried out by Hampshire Medical Fund. The remaining 50% is used by the Unity platform to provide prizes and cover administration.

The HMF Team



Lucy Liddell

Charity Director



Zoe Walker

Events Manager



Christine Cunningham

Trust and Finance Manager



Tamsin Raymond

Regular Giving Manager



Jo McGivern

Marketing & Communication Manager



Caroline Laird

Marketing Team

PATRONS Lord and Lady Lloyd Webber

TRUSTEES Dr Andrew Bishop MA MB BChir MD FRCP - Governor,
Lady Carolyn Warren – Governor, Daniel Benton – Chairman, Tom Hudson - Vice Chairman,
Lucy Arnott - Chief Executive, Robert Blaxland – Treasurer,
Ruth Williamson - Chief Medical Officer HHFT, Timothy Nedas MB BS FRCS,
Aarti Shah MA BM BCh MRCP FRCR, Henrietta Mason, Nigel Armstrong, Lucy de Laszlo

Call us

 **01256 314759**

 Email us: office@hampshiremedicalfund.org

 Visit us: hampshiremedicalfund.org

Follow us:    

2026 Events

Dates for your Diary

Monday 6th April to Monday 20th April

The Future Pathways Auction (online)

Thursday 23rd April

B2B Breakfast at The Yard

Wednesday 29th April

Celebration of Spring at Hospital of St Cross in Winchester

Sunday 10th May

Classic Car Rally

Sunday 14th June

The Great Adventure Challenge at Dummer Down Farm

Thursday 17th September

B2B Breakfast at The Grosvenor, Stockbridge

12th – 13th November

Christmas Fair

Thursday 3rd December

Celebration of Christmas at Hospital of St Cross in Winchester



HAMPSHIRE
MEDICAL FUND

Become a Friend of **HMF** and support your local Hospital:

Basingstoke & North
Hampshire Hospital

Royal Hampshire County
Hospital, Winchester

Andover War
Memorial Hospital

PRIZE DRAW

Win a **DEXA Body Composition Scan
& Mini Health Screen**

Sign up as a 'Friend' of the Hampshire Medical Fund before 30th June 2026 and you'll be entered into our exclusive prize draw to win a DEXA Body Composition Health Scan with a Mini Health Screen at The Candover Clinic.

Becoming a 'Friend' means setting up a regular donation to help us fund vital, cutting-edge medical equipment for your local NHS hospitals. You'll be supporting life-saving care for others - and you could also win the opportunity to gain invaluable insight into your own health, with a comprehensive body composition scan and a mini health screen.

To qualify for the draw, your Friend status must still be active in June 2026. Your first payment will act as your entry to the prize draw so you will not be able to claim Gift Aid on this first payment. Subsequent payments will be eligible for Gift Aid. T&Cs apply.



Find out more at hampshiremedicalfund.org

Registered charity Number 1192553

