



HAMPSHIRE
MEDICAL FUND

UPDATE

AUTUMN/WINTER 2023



Thank you 2023



Newsletter from the Hampshire Medical Fund



A Message from Daniel Benton

Chairman, Hampshire Medical Fund

The more I get to know our local hospitals, the more I see that what the Hampshire Medical Fund manages to achieve to help them is hugely important to the medics and staff. We can only do it because of our wonderful supporters.

We raise money in three main ways: events, regular giving and individual efforts. Over the past six months we have had a busy schedule of events. Some of these events are enduringly popular ones which we have run in the past, such as the Classic Car Rally and the Good Festival, and we are hugely grateful to the energy of the committees organising them. We have also tried some new events this year, such as the Supernova Disco for children in years 7 and 8, and the Party in the Woods. We have raised very nearly £100k through events already this year and still have several wonderful dates in the diary in the run up to Christmas, and aim to more than double the total to date. None of this would be possible without our supporters, the organisers and also our brilliant sponsors. Thank you.

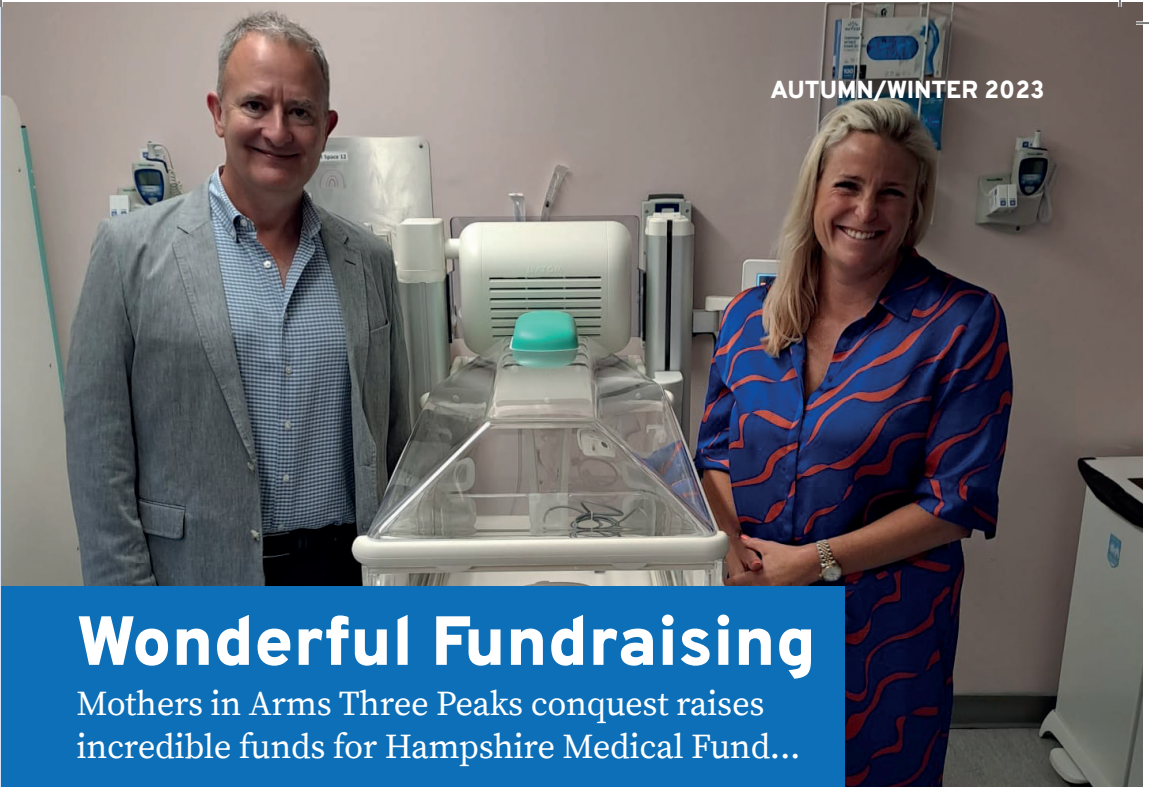
Regular giving happens principally through the 200 and 500 Clubs. We have a core set of long-term supporters, and our focus for the next few months is to try to work out how to add to that set and make more people friends of the HMF. Growing our regular giving base will give us a much more predictable income

stream than we can achieve through events, and I feel that we really ought to aspire to a much larger set of supporters. Huge numbers of people who are treated at the hospitals still don't know about us, so do spread the word to your friends, colleagues and neighbours – the more we raise, the more we can help the hospitals.

We also have many people who make individual efforts to raise money for us. There is a huge range of fundraising activity happening, from bake sales in schools to cricket matches and fashion shows. I can't possibly list all of those efforts here, but I must mention Jen Ashford and her 'Mothers in Arms' team: their Three Peaks Challenge has enabled us to buy three incubators and a Vapotherm machine for the neonatal units at the hospitals.

I hope you enjoy reading in this newsletter both about the wonderful efforts people have made to raise money for us, and also some more detail about the equipment we have been able to buy, and plan to buy, as a result. I hope also that as you read it you feel proud of what we have managed to do together. I look forward to seeing many of you at our events over the next few months.

Daniel Benton
Chairman



Wonderful Fundraising

Mothers in Arms Three Peaks conquest raises incredible funds for Hampshire Medical Fund...

In the Summer of 2022, newborn baby Max Ashford tragically died of Listeriosis at Royal Hampshire County Hospital, Winchester.

Max's mother, Jennifer Ashford, decided to form 'Mothers in Arms', a group of 30 women who came together to take on the Three Peaks Challenge to memorialise Max and raise money for the Royal Hampshire County Hospital's Neonatal Unit in Florence Portal House, in order to help prevent further tragedies for babies and families.

The Three Peaks Challenge consists of climbing the tallest mountain peaks in Scotland (Ben Nevis: 1,345 m), England (Scafell Pike: 978m) and Wales (Snowdon: 1,085m).

Through this challenge, which started in June, Mothers in Arms have raised over £60,000 from their incredible fundraising efforts. This is enough to purchase four

pieces of amazing equipment for the neonatal unit at Royal Hampshire County Hospital, including three incubators which will keep preterm, sick and vulnerable babies secure and warm whilst allowing access for medical and nursing staff to not only observe and monitor but also to perform routine care and complex procedures for the babies without the risk of hypothermia.

Hampshire Medical Fund's Chief Executive, Lucy Arnott, said *"We are absolutely thrilled and enormously grateful to this inspirational group of ladies who have enabled the Hampshire Medical Fund to purchase four major pieces of equipment for the neo-natal unit in Winchester Hospital. These machines will be changing and saving the lives of some of the tiniest and most vulnerable patients in our community within a matter of weeks."*

Hampshire Medical Fund

WONDERFUL FUNDRAISING...



FELT Art Exhibition with Charles Wilson

The wonderful exhibition at Stubbs Studio in May saw 15 artists exhibiting alongside the recent work of Charles Wilson. The three day exhibition very kindly donated 5% of sales to the Hampshire Medical Fund raising an incredible £568 for the charity. Thank you to all who attended and the artists involved.



Summer cricket: Royal Hampshire Hospital Cricket Club versus Whitchurch Cricket Club

The Royal Hampshire Hospital Cricket Team organised a day of cricket holding a match against friends at Whitchurch Cricket Club. The day was a great success and very kindly resulted in a donation of £350. Thank you to everyone who played and donated!

Andover Anton Rotary donates £4,000

A big thank you to the Andover Anton Rotary Club for donating £4,000 to purchase a Bariatric Wheelchair for Andover War Memorial Hospital.

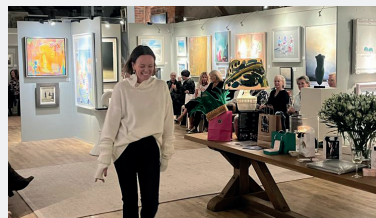


Chic Teak and Adam Architecture support HMF at the Alesford Show

On Saturday 2nd September, the Hampshire Medical Fund team had a fantastic day talking to visitors about the work we do. Chic Teak very kindly sponsored our stall and donated a beautiful bench for our raffle which raised over £300. Adam Architecture fed hundreds of people throughout the day on a delicious hog roast, the proceeds of which benefited the Hampshire Medical Fund. A fun day was had by all! Thank you Chic Teak and Adam Architecture for your support.

Howard Park Bowls Club Raffle raises an amazing £361

As the bowls season comes to a close, the Howard Park Bowls Club in Basingstoke have been busy raising money through raffles at their matches. The result, a wonderful £361 in support of their local NHS hospitals. We are truly grateful.



Autumn Fashion and Art Show

On Thursday 12th October, the Nadia Waterfield Fine Art Gallery near Stockbridge hosted a wonderful fashion show in aid of the Hampshire Medical Fund. The JAX Boutique and Catherine Zoraida treated guests to a dazzling catwalk display among the gallery's stunning artwork. A huge thank you to everyone who joined and supported this special evening raising a magnificent £1,600 for the charity.

HMF 2023 Events

Supernova Disco

In April during the Easter holidays, HMF hosted a glitter and gold themed party for children in Years 7 & 8 at the Winchester Science Centre and Planetarium. The evening was in aid of a very special cause, in memory of Artemis Alice Wood who was treated for leukaemia at the Royal Hampshire County Hospital, Winchester. In hoping to raise enough funds for two ISTAT machines, the evening surpassed this in enabling three to be bought! These portable devices enable existing patients to have oncology blood screening at home with immediate results avoiding delay in admissions into hospital if needed. A huge thank you to Sophie Hume, Juliana Wood and their brilliant team for organising a fantastic evening.



Classic Car Rally

Vintage and modern sports cars departed from Highclere Castle on a beautiful May day headed for Laverstoke Park. Then it was on for lunch at The Grange finishing with afternoon tea with Lord & Lady Remnant in Baughurst. Thank you to all our wonderful sponsors: Knight Frank, Tayabli & White, Marshall Jaguar, RW Armstrong, Castle Acre Insurance, Waverton Investment Management and BCM. The event funded FEES equipment for speech and language therapists at the Royal Hampshire County Hospital. Thank you to Maggie Heath and Toby Ward for organising a wonderful event.

Party in the Woods

In May, the woods near Stockbridge came alive as HMF hosted the inaugural Party in the Woods. With long feasting tables and dancing under the stars, the evening supported by Moore Barlow, Fowler Architect and Planning, The Walcote Practice and Rathbones was hugely successful. The evening raised a staggering £46,456 enabling the purchase of a Bowel Disease Marker Analyser for the Pathology Department at Basingstoke and North Hampshire Hospital.



Good Festival

Our biggest event of the year moved venue to the beautiful estate of Dummer Down Farm. We welcomed families galore from the surrounding villages and wider community of Hampshire. With live music throughout the day, foodie treats, alpaca walking, punch & judy, pony rides, silent disco, crocodile encounters, basket weaving, a giant slippery slide, festival headdresses and glitter art, wonderful stallholders, dog show classes and bubble football there was something for all the family. A huge thank you to everyone who joined us - we are looking forward to Saturday 16th June 2024 already - please mark your calendars!



Hawaiian Party

Summer Half-Term followed with a Hawaiian themed evening for teenagers in Years 9 and 10 at the Fieldgate Centre in Kingsclere. The funds raised from the evening kicked off the fundraising for one of two ventilators needed for Basingstoke & North Hampshire Hospital and Royal Hampshire County Hospital critical care units. Thank you to Sophie Hume and her committee.



Two Smoking Barrels Clay Pigeon Shoot

A glorious sunny day in October for our sixth clay pigeon shoot at Folly Farm proved a fun and competitive event with 80 guns competing in categories such as 'Estate Challenge', 'High Gun Team', 'Ladies Team' and 'Major/Minor Team'. Thank you to Prime Purchase, RW Armstrong, NFU North Hampshire, Earthline, Crop Advisors, Hi Fly, Moundsmere Estate Management, Finch Insurance, Fowler Architecture and Planning and Lane Monnington Welton Accountants. The day raised a brilliant £13,000 towards a QNRG+ Calorimetry Device for Basingstoke and North Hampshire Hospitals intensive care unit.



HMF 2023 Events still to come

Christmas Fair

Scan here to buy tickets



Après-Ski Party



Only a few tickets left!



Celebration of Christmas

Scan here to buy tickets



Medical Equipment Funded

2023 has been a magnificent year for purchasing cutting-edge medical equipment. Please read about the incredible equipment we have bought in support of our local hospitals, so far this year!



FUNDED

ISTAT Machines for Paediatric Oncology

These incredible portable devices enable existing patients to have oncology blood screening at home, with immediate results avoiding the delays in admissions into hospital if needed. Paediatric cancer patients are amongst the most vulnerable to be treated and face an agonising rollercoaster of hospital admissions, fear and pain throughout their treatment journey. This machine will allow some of the most unwell children in our hospitals and their parents to know calmly and quickly whether they need to be re-admitted or their treatment changed.



FUNDED

Perilynx Foetal Fibronectin Systems for Pathology

The test that clinicians can run on these devices will rule in or out whether an expectant mum will go into labour in the next 7 days (in addition to other indicators). By doing this the Trust can either safely send mum-to-be home with community support or admit and immediately start preventions and/or treatment to improve the baby's lungs before birth. This would not only improve the medical outcome on mum and planning treatment, but the mental well being also benefits. Knowing that you are not going into early labour will reduce stress levels which can cause issues in late pregnancy themselves. This is especially important to those with pregnancy complications or previous history of premature birth.



FUNDED

Anaerobic Workstation for Microbiology Department

The ability for microbiologists to study how organisms live, grow, and interact with their environments is vital to understanding their characteristics, with the overall aim to prevent, diagnose and treat very impactful diseases such as (but not limited to) tetanus, botulism, and brain abscesses. This workstation will provide microbiologists at the Basingstoke and North Hampshire Hospital the best conditions for the processing, incubation, and examination of samples without exposure to atmospheric oxygen or disturbing the desired incubation conditions.



FEES equipment for Speech and Language Therapy Service

Fibreoptic Endoscopic Evaluation of Swallowing (FEES) equipment is a state of the art tool for assessing swallowing difficulties. A fiberoptic camera can be passed up the nose and into the throat. It allows Speech and Language Therapists to watch a patient's swallowing on the inside to see where the difficulties are and if any food or drink is going into their lungs. This allows us to see where the problems are and treat the swallowing difficulty accurately. It is quicker and cheaper than other assessments such as X rays of swallowing and does not involve radiation. It can be used in intensive care, inpatients and out-patient settings.



Fluid warmer and Chest compression device for Resuscitation

The Belmont Fluid Warmer and the Lucas Compression Device are both incredibly useful pieces of equipment for patients in resuscitation rooms. The Belmont Fluid Warmer can provide large volumes of fluids or blood in a receiving unit, used in the event of when a patient is too unstable to travel to a trauma centre. It can also be utilised for patients suffering significant bleeds who require large volumes of fluids and blood. The Lucas Compression Device will be able to provide high quality, continuous chest compressions mechanically, which have been proven to give the best possible outcome for resuscitating patients.



Sleep study machine for Neonatal unit

A sleep study machine allows the neonatal unit to closely monitor how much oxygen the most preterm babies need as they approach their discharge date. These babies have often had hospital stays of several months and having this capacity enables clinicians to make their discharge planning as smooth and efficient as possible – reducing any stress for their parents at this critical time and preventing any unnecessary delays. The device is small enough that it can be easily moved between bedspaces and its portability gives it the added advantage of being able to be transferred to the baby's home environment if community monitoring is required.



VapoTherm HVT 2.0 Heat and Humidification Device for Paediatric Departments

These systems will enable the transfer of critically ill babies and children from the Emergency Department to the Paediatric wards. This is currently not possible as it cannot be safely done. The system would mean that there is less chance of babies needing to be incubated and ventilated, it would free up Emergency resuscitation areas and ultimately change and save lives with immediate effect of some of the most critically ill children and babies in our Hampshire Hospitals.



FUNDED

Bed Weighing Scales for Fracture Unit

The Marsden M-950 is an easy-to-use bed weighing scale that will benefit the patients and healthcare professionals on ward D4 of Basingstoke and North Hampshire Hospital.

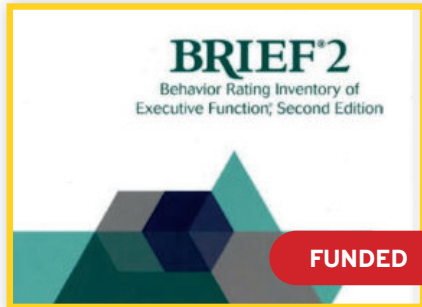
These scales make weighing bed bound patients straightforward and hassle-free, with no discomfort to neck or femur fracture patients.



FUNDED

Bowel Disease Marker Analyser for the Pathology and Biochemistry

This incredible new equipment will analyse faecal samples to look for tiny traces of blood which if present, can be an early marker for bowel cancer. Use of this new device will allow quicker referral and will greatly reduce the time from when the pathology team receives the sample to when they are able to release a result, ultimately resulting in a quicker diagnosis of patients with bowel cancer symptoms and enabling those patients to be put on the relevant treatment pathway as soon as possible.



FUNDED

Behaviour Rating Inventory of Executive Function for Paediatric Psychology

Funds raised towards this project will help with the purchase of a Behaviour Rating Inventory of Extensive Function professional manual for paediatric psychologists. The BRIEF2 is a rating scale that assesses a child's executive function from multiple perspectives. The assessment includes rating forms for teachers and parents (for ages 5-18), and a self-report form for children and adolescents (for ages 11-18).



FUNDED

QNRG+ Calorimetry Device

Funds raised towards this project will help us to purchase a QNRG+ Calorimetry Device for Basingstoke and North Hampshire Hospitals intensive care unit. The QNRG+ Calorimetry Device is the next generation of Indirect Calorimetry (IC), enabling fast, accurate and intuitive Resting Energy Expenditure (REE) measurements. There are many benefits to the patients that use this device, such as targeted nutrition support for complex critically ill patients, decreased length of stay in ICU and in hospital by supporting weaning from ventilator and enhancing recovery throughout hospital stay, and decreased short term mortality (28 days). It's estimated that around 100-200 patients per year will benefit from the intervention.

Medical Equipment

still to fund



Five Incubator Carestations

Funds raised towards this project will help with the purchase of five new Incubator Carestations.

These incubators will hugely enhance treatment and the patient experience for the 250 – 300 babies admitted to our neo-natal units each year and their parents too. They have rotating mattresses allowing specialists to work most effectively on these incredibly vulnerable babies. Space around such a small patient often with many tubes and wires attached is vital. The lids to these incubators also lift up, allowing the preferable option of ‘passive cooling’ for babies with brain injuries and giving parents the precious opportunity to touch their babies when they are otherwise unable to hold them. These Incubator care stations will be life changing for some of the tiniest patients across our hospitals and in turn for their parents.

TARGET: £96,195
STILL TO FUND: £61,755

Please support in any way you can to help us fund the remaining pieces of equipment on our 2023 Wish List. Please contact one of our team for further information. Thank you.



Two Hamilton T1 Transfer Ventilators

These gold standard ventilators will be used by the Basingstoke & North Hampshire Hospital and the Royal Hampshire County Hospital in Winchester, to transfer critically ill patients between departments or hospitals. One of the biggest benefits of these ventilators over the current equipment in use, is that they can be safely used for both adults and small children. With the current pressures on paediatric critical care beds, having these ventilators available on each site to safely stabilise critically ill children is particularly important.

TARGET: £45,790
STILL TO FUND: £34,540



Lower Limb Weights Press Machine

Funds raised towards this project will help with the purchase of a new Lower limb weights press machine for the Alton physiotherapy department.

This equipment is highly valued in the MSK Physiotherapy Department. Its primary use is for improving leg strength, particularly for the quadriceps and calf muscles. These muscles are used in daily activities such as walking, going up and down steps and gardening as well as in sporting activities. They are also important for balance. We use this equipment with a wide range of patients including those with arthritis, patients post-surgery or injury, those looking to improve strength and mobility post illness, inactivity or falls and those with chronic joint problems such as fibromyalgia. The equipment can be used by patients on a 1:1 basis or as part of a class and because it is adjustable we can alter the settings to suit most appropriate patients.

The Alton team provides approximately 5,000 patient appointments per year with at least 20% of these requiring some form of gym rehabilitation.

TARGET: £1,832

STILL TO FUND: £1,832

Donate today at
hampshiremedicalfund.org



Update to regular giving

We are excited to announce that our regular giving is changing from the current 200 Club to “**Become a Friend of HMF**”. Regular giving is so very vital to the charity and is our only guaranteed source of annual funding. For existing 200 Club members you do not need to do anything at this stage.

If you do not currently donate on a regular basis to HMF and like the idea of doing so, please contact Tamsin, our Regular Giving Manager on: tamsin@hampshiremedicalfund.org or 01256 314759.

We are hugely grateful for your support and look forward to telling you more about this development in the near future.

Support the Hampshire Medical Fund by buying Christmas cards!

Please email christmas@hampshiremedicalfund.org with your order. The deadline is Friday 3rd November. Personalised cards are also available.





HAMPSHIRE
MEDICAL FUND

Become a Friend of **HMF**

and support your local Hospital:

Basingtoke & North
Hampshire Hospital

Royal Hampshire County
Hospital, Winchester

Andover War
Memorial Hospital

Find out more at hampshiremedicalfund.org

Registered charity Number 1192553



Regular Giving for Corporate Supporters: Become a Business Friend

The Hampshire Medical Fund has fantastic and loyal corporate supporters currently known as the 500 Club. We are looking forward to announcing our “Become a Business Friend” as the new platform for corporate support changes. As an existing 500 Club member you will automatically become a Business Friend. The benefits of supporting the Hampshire Medical Fund as a business are many:

- ❁ Tax relief on your donations to the fund.
- ❁ Acknowledgement on the Hampshire Medical Fund website with a description of your business, your company logo and a web link.
- ❁ Invitation to B2B networks events. Our 2024 B2B’s are on 11th January and 18th April.
- ❁ Opportunity to sponsor Hampshire Medical Fund events.
- ❁ Advertising in our bi-annual newsletter.
- ❁ Email and website banners as “Proud supporters of the Hampshire Medical Fund”, highlighting your CSR activity.

The Hampshire Medical Fund are incredibly grateful to all our Corporate Supporters:



www.knightfrank.co.uk



www.thechampiongroup.co.uk



www.watershipproperty.com



www.rwarmstrong.co.uk



www.kingsclere.com



www.spafaxmirrors.com



www.cheamschool.com



www.morsewebb.co.uk



www.childsfarm.com



www.roseofjericho.co.uk



www.jmfinn.com



www.candoverclinic.com



www.waverton.co.uk



www.nfumutual.co.uk/agent-offices/hungerford



www.lmwca.co.uk



www.harlequincps.co.uk



www.middletonadvisors.com



www.rathbones.com



www.faap.co.uk



www.nfumutual.co.uk/agent-offices/north-hampshire



www.tayabali-white.co.uk



www.lucymarshinteriors.com



www.castleacreinsurance.com



www.thewalcoteppractice.co.uk



www.bcm.co.uk



www.adamarchitecture.com



www.ross-brooke.co.uk



www.prime-purchase.com



www.optibacprobiotics.com/uk



www.cleverlywrapped.com



www.lankesterwhite.com



www.corston.com



www.richs.co.uk



www.phillips-law.co.uk



www.dreweatts.com



www.struttandparker.com



agooch@hotmail.fr



www.sassandedge.com



[d-id.uk](http://www.d-id.uk)



www.aspiga.com



www.carolineloup.com



www.jennaburlingham.com

The HMF Team



Lucy Liddell
Charity Director



Zoe Walker
Events Manager



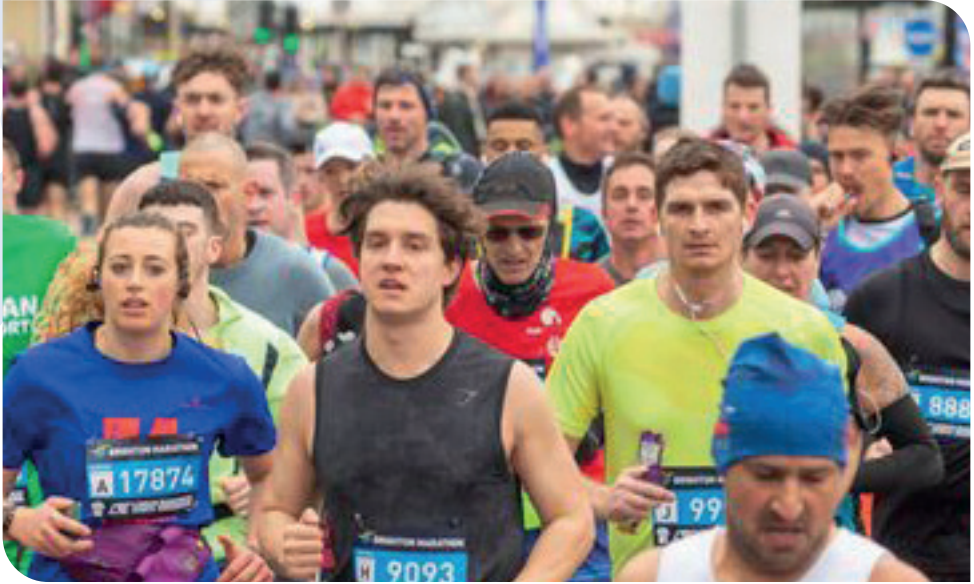
Christine Cunningham
Trust and Finance Manager



Tamsin Raymond
Regular Giving Manager

PATRONS Lord and Lady Lloyd Webber

TRUSTEES Dr Andrew Bishop MA MB BChir MD FRCP - Governor,
Lady Carolyn Warren - Governor, Daniel Benton - Chairman, Lucy Arnott - Chief Executive,
Romaine Foot - Vice Chairman, Simon Troughton - Treasurer, Timothy Nedas MB BS FRCS,
Aarti Shah MA BM BCh MRCP FRCR, Henrietta Mason, Nigel Armstrong,
Tom Hudson, Lara Alloway



Run the Brighton Marathon in support of the Hampshire Medical Fund.

Have you ever wanted to run a marathon? Are you a little bit tempted? The Hampshire Medical Fund have three spaces in the Brighton Marathon on Sunday 7th April 2024. Take on one of the UK's biggest and best marathons at the Brighton Marathon in this beautiful coastal city. The stunning English channel coastal views take you along next to Brighton beach. Distance: 26.2 miles, Location: Brighton and Hove.

Please contact us for further information.

Welcome to Florence Mary Neave

We are thrilled to announce that Francesca (Charity Director) and Luke welcomed beautiful Florence into the world on 28th May. We know you will join us in congratulating them on the arrival of their beautiful daughter and a sister for Tom.

Florence is absolutely gorgeous!



How you can help

Make a legacy, with Hampshire Medical Fund in your will

By leaving a gift in your will, you can help us to continue buying life-changing and life-saving medical equipment for the generations to come. Leaving 10% of a net estate to charity reduces the applicable tax rate applied to the balance of the estate from 40% to 36%.

Match funding

Encourage employees within your workplace to organise a fundraising event or activity, and encourage your employer to match whatever sum is raised.

Volunteering to help at our events

Volunteering at our fundraising events is an enormous help to the charity and often serves as a fun and fulfilling day for all involved!

Give as you earn

Visit www.charitablegiving.co.uk to learn how to do this. Payments are made automatically, directly from your pay/pension/charitable trusts. Donations made through Payroll Giving are tax efficient.

Nominating us to be your work Charity of the Year

Organise a calendar of fundraising events throughout the company's year in support of the Hampshire Medical Fund. We can help you to raise awareness of events on social media and provide digital marketing banners to highlight your CSR.

Gift Aid (UK Taxpayers)

Let us know if you are happy for us to claim gift aid on any donations you make. We can claim an uplift of 25% from HMRC.

Are you the Trustee of a Charitable Trust?

If you are a Trustee of a Charitable Trust or Foundation which is registered at The Charities Commission, you could recommend the Hampshire Medical Fund for a donation. Specific items of equipment or departments can be supported. Just ask us for details!

Collection tins

Please contact us if you would like a Hampshire Medical Fund collection tin for your workplace.



**Donate today at
hampshiremedicalfund.org**



This newsletter was made possible by donations from the NFU North Hampshire

INSURANCE THAT SUPPORTS CHARITIES

Purchase any new NFU Mutual Bespoke, Home and Lifestyle or commercial policy through NFU Mutual North Hampshire agency and we will donate 5% of your annual premium to the Hampshire Medical Fund.



proudly supported
by NFU Mutual
North Hampshire Agency

To find out more call us on **01256 688522** or email **north_hampshire@nfumutual.co.uk**

Terms and conditions apply



NFU Mutual
INSURANCE | PENSIONS | INVESTMENTS